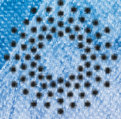


ADVERTISEMENT



LONDON  
METROPOLITAN  
UNIVERSITY

Understanding Lambeth's LGBTQI+ communities'  
experience of Covid-19 LamQ+

# Are you LGBTQI+? Do you live in Lambeth?

If yes, we would love to hear from  
you about the impact of the coronavirus  
pandemic on your life

Our research is looking to gain insight into the experiences of LGBTQI+ communities and to influence policies and services that enable LGBTQI+ people to thrive.

The research project is led by experienced researchers from London Metropolitan University working closely with local organisations. The work will be conducted between January and July 2021 and has three broad aims:

- 1 Identify the needs and challenges experienced by Lambeth's LGBTQI+ communities
- 2 Develop new understanding of the experiences and needs of Black and Ethnic Minority LGBTQI+ people who have been under-represented in previous studies
- 3 Design solutions with LGBTQI+ communities, researchers, policy maker and providers to develop solutions that work.

## How to get involved?

For more information about the project email Daniella Shaw, [d.shaw2@londonmet.ac.uk](mailto:d.shaw2@londonmet.ac.uk), or visit our website, [londonmet.ac.uk/lamq](https://londonmet.ac.uk/lamq)

If you would like to find out more, but do not have access to the internet, please contact us on **020 7133 5254**.



OPENING DOORS  
LONDON

